

Approved:

Effective: August 16, 2017
Review: May 30, 2017
Office: Systems Planning
Topic No.: 525-030-020-a



Department of Transportation

CAPACITY IMPROVEMENT ALTERNATIVES

PURPOSE:

To outline the Florida Department of Transportation's (Department's) direction for consideration of capacity improvements when a need to widen has been identified on existing limited access facilities on the state highway system (SHS).

AUTHORITY:

Sections 20.23(3)(a) and 334.048(3), Florida Statutes (F.S.)

REFERENCES

Sections 338.151, 338.155, 338.166, 335.02(3), and 338.221, F.S.
FAC 14-100-004

Department Procedure No. 350-090-001, Economic Feasibility Development Process (applies to Florida's Turnpike Enterprise facilities only)

SCOPE:

This procedure applies to the Department limited access highway projects on the SHS identified for capacity improvement/need in the Five Year Work Program, the Strategic Intermodal System (SIS) Ten Year Plan, or the SIS Cost Feasible Plan. Department offices, Central Office, Florida's Turnpike Enterprise (FTE), the Districts, and consultants under contract with the Department will use this procedure.

GENERAL:

It is the intent of the Department to plan, design and operate the SHS as efficiently as possible. When adding capacity to existing limited access facilities on the state highway system, managed lane strategies inclusive of express lanes shall be evaluated.

DEFINITIONS:

Express Lanes – A type of managed lane where dynamic pricing through electronic tolling is applied to lanes with through traffic, having fewer access points. Express lanes can co-locate within an existing non-tolled or tolled facility to manage congestion and provide a more reliable trip time.

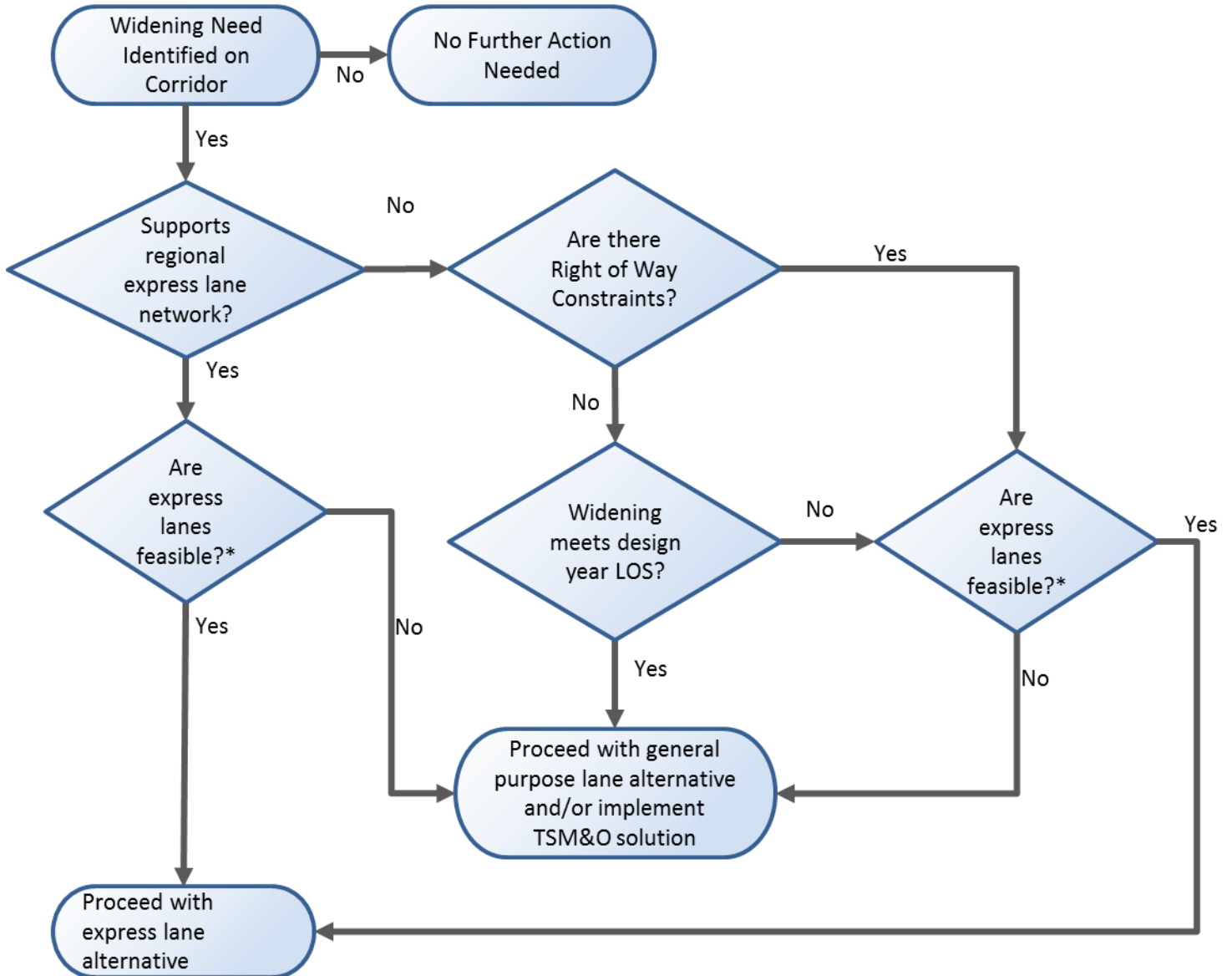
Managed Lanes – Highway facilities or sets of lanes within a highway facility where operational strategies are proactively implemented and managed in response to changing conditions with a combination of tools. These tools may include accessibility, vehicle eligibility, pricing, or a combination thereof. Types of managed lanes include truck only lanes, truck only toll lanes, bus rapid transit lanes, reversible lanes, and express lanes.

1. ADDITIONAL CAPACITY NEED ON AN EXISTING LIMITED ACCESS SHS FACILITY

Limited access facilities give priority to the through movement of traffic with no right of access to abutting land and side streets are accessed by grade separated interchanges. All Florida's Turnpike Enterprise (FTE) facilities and Interstates are considered limited access facilities. When a capacity need has been identified on an existing limited access facility on the SHS, the improvement alternative(s) shall be in accordance with the decision tree outlined in Fig 1.

1.1 DECISION TREE FOR CAPACITY IMPROVEMENT ALTERNATIVES

Capacity Improvement Alternatives Decision Tree



* Reference screening criteria for testing feasibility of express lanes

2. **TRAINING**
None

3. **FORMS**
None